



## SAILING INSTRUCTIONS

### Europacup Javelin 2017

Organised by **ZVO and wsc Loga**

under the auspices of the Royal Netherlands Watersport Association (RNWA)

from 23 July to 28 July 2017

location: Oldambtmeer

---

## 1. RULES

- 1.1** The regatta will be governed by the rules as defined in *The Racing Rules of Sailing 2017-2020 (RRS)*.
- 1.2** If there is a conflict between languages the original text will take precedence.


## 2. NOTICES TO COMPETITORS

Notices to competitors will be posted on the official notice board(s) located at harbor entrance.

## 3. CHANGES TO SAILING INSTRUCTIONS

Any change to the sailing instructions will be posted before 0900 on the day it will take effect, except that any change to the schedule of races will be posted by 2000 on the day before it will take effect.

## 4. SIGNALS MADE ASHORE

- 4.1** Signals made ashore will be displayed at the flagpole near the office tent.
- 4.2** When flag AP  is displayed ashore, '1 minute' is replaced with 'not less than 45 minutes' in the race signal AP.

## 5. SCHEDULE OF RACES

- 5.1** Dates of racing:

Date	Class	Javelin
23 July	15.00	Practise Race
24 July	11.00	asap asap
25 July	10.30	asap asap
26 July	10.30	asap asap
27 July	10.30	asap asap
28 July		reserve day



**5.2** Number of races:

<i>Class</i>	<i>Number</i>	<i>Races per day</i>
<i>Javelin</i>	4	3

- (a) Reserve days may be used if races are not completed as scheduled or if the race committee considers it unlikely that races will be completed as scheduled.
- (b) One extra race per day may be sailed, provided that no class becomes more than one race ahead of schedule.

**5.3** The scheduled time of the warning signal for the first race each day is 5 minutes.

**5.4** On the last day of the regatta no warning signal will be made after 15.00.

**5.5** July 28 is a Day of Reserve.

**6. CLASS FLAGS**

Class flags will be: The flag of the Javelin Class Association.

**7. RACING AREAS**

Attachment A shows the location of racing areas.

**8. THE COURSES**

**8.1** The diagram in Attachment B show the course, including the approximate angles between legs, the order in which marks are to be passed, and the side on which each mark is to be left.

**8.2** The amount of rounds is not fixed beforehand but will be signalled by flag "S" at the leeward mark approximately after 1 hour. The finish will then be layed out near the windmark.

**9. MARKS**

**9.1** Marks of the course are: yellow buoys.

**9.2** The substitute conform rules 34(b) is an orange buoy.

**9.3** The starting and finishing marks will be Orange (both OLM and ILM).

**10. AREAS THAT ARE OBSTRUCTIONS**

There are no obstructions.

**11. THE START**

**11.1** Races will be started by using rule 26 RRS with the warning signal given 5 minutes before the starting signal.

**11.2** The starting line will be between orange buoys.



## **12. CHANGE OF THE NEXT LEG OF THE COURSE**

- 12.1** To change the next leg of the course, the race committee will move the original mark (or the finishing line) to a new position.

## **13. THE FINISH**

The finishing line will be between orange buoys.

## **14. PENALTY SYSTEM**

Reserve

## **15. TIME LIMITS AND TARGET TIMES**

- 15.1** The sailing time for one race is around 60 minutes. The time to Mark 1 is limited to 25 minutes - if no boat has passed Mark 1 within this time limit, the race will be abandoned.
- 15.2** Boats failing to finish within 20 minutes after the first boat sails the course and finishes will be scored Did Not Finish without a hearing. This changes rules 35, A4 and A5 RRS.

## **16. PROTESTS AND REQUESTS FOR REDRESS**

- 16.1** Protest forms are available at the sailing office located in the harbor. Protests shall be delivered there within the protest time limit.
- 16.2** The protest time limit is 60 minutes after the last boat has finished the last race of the day. The same time limit applies to protests by the race committee and protest committee about incidents they observe in the racing area and to requests for redresses. This changes rules 61.3 and 62.2.
- 16.3** Notices will be posted within 15 minutes of the protest time limit to inform competitors of hearings in which they are parties or named as witnesses. Hearings will be held in the jury room, located at harbor office, beginning at 16.00.
- 16.4** Notices of protests by the race committee or protest committee will be posted to inform boats under rule 61.1(b) RRS.
- 16.5** Breaches of instructions 10.3, 17, 18 and 21 will not be grounds for a protest by a boat. This changes rule 60.1(a) RRS. Penalties for these breaches may be less than disqualification if the protest committee so decides.
- 16.7** On the last day of the regatta a request for reopening a hearing shall be delivered
- (a) within the protest time limit if the party requesting reopening was informed of the decision on the previous day;
  - (b) no later than 15 minutes after the party requesting reopening was informed of the decision on that day.
- This changes rule 66 RRS.



## **17. SCORING**

**17.1** The Low Point Scoring System, Appendix A of the RRS, will apply

**17.2** Five Races are required to be completed to constitute a series

**17.3** A boat's series score will be established as follows:

(a) When fewer than 6 races have been completed, a boat's series score is the total of her race scores

(b) When six to nine races have been completed, a boat's series score is the total of her race scores excluding her worst score.

(c) When ten or eleven races have been completed, a boat's series score is the total of her race scores excluding her worst two score.

## **18. SAFETY REGULATIONS**

**18.1** Check-out and check-in: at the race committee.

**18.2** A boat that retires from a race shall notify the race committee as soon as possible.

## **19. REPLACEMENT OF CREW OR EQUIPMENT**

Substitution of crew or equipment will not be allowed unless approved by the race committee. Requests for substitution shall be made to the committee at the first reasonable opportunity.

## **20. EQUIPMENT AND MEASUREMENT CHECKS**

A boat or equipment may be inspected at any time for compliance with the class rules and sailing instructions. There will be a date before the first start for measurement checks and measuring new equipment.

## **21. EVENT ADVERTISING**

The regatta will be classified as a Category C Event in accordance with Appendix 1 of the RRS. Competing boats may be required to display advertising of the Event Sponsor, on each side of the boat, on the forward 25% of the hull.

## **22. OFFICIAL BOATS**

Official boats will be marked with RC flags.

## **23. SUPPORT BOATS**

Team leaders, coaches and other support personnel shall stay outside areas where boats are racing from the time of the preparatory signal for the first class to start until all boats have finished or retired or the race committee signals a postponement, general recall or abandonment.

## **24. TRASH DISPOSAL**

Trash may be placed aboard support and race committee boats. A penalty for breaking rule 55 RRS may be less than disqualification if the protest committee so decides. This changes rule 64.1 RRS.

## **25. HAUL-OUT RESTRICTIONS**

Reserve.



## **27. RADIO COMMUNICATION**

A boat shall neither make radio transmissions while racing nor receive radio communications not available to all boats. This restriction also applies to mobile telephones. VHF will only be used for safety communication.

## **28. PRIZES**

Prizes will be given to the three highest ranked boats in the classification of the series.

## **29. DISCLAIMER OF LIABILITY**

Competitors participate in the regatta entirely at their own risk. See rule 4 RRS, Decision to Race. The organizing authority will not accept any liability for material damage or personal injury or death sustained in conjunction with or prior to, during, or after the regatta.

## **30. INSURANCE**

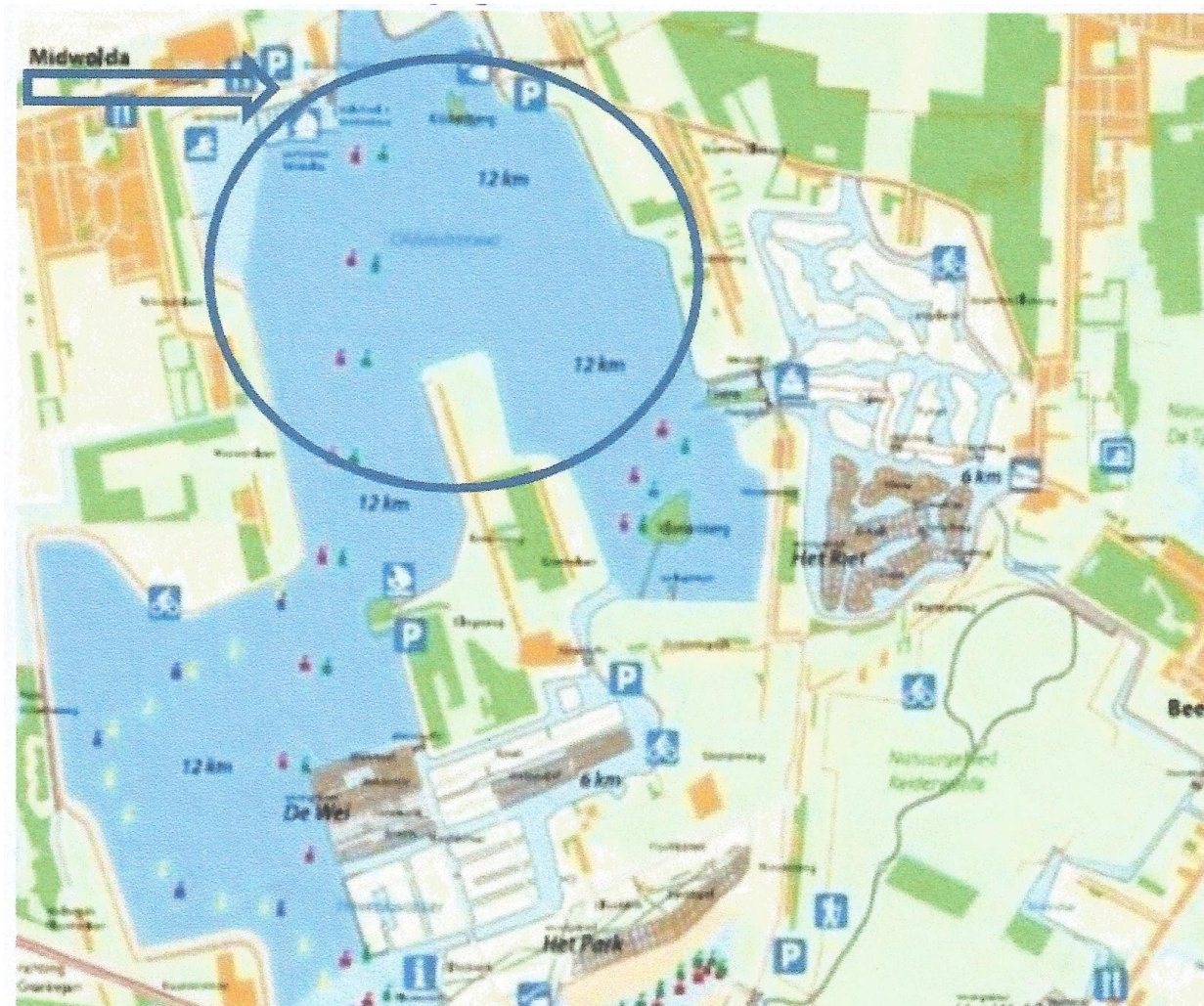
Each participating boat shall be insured with valid third-party liability insurance with a minimum cover of Euro 640.000 per event or the equivalent.

## **31. ORGANISATION**

The race officer is: Frank Dane.

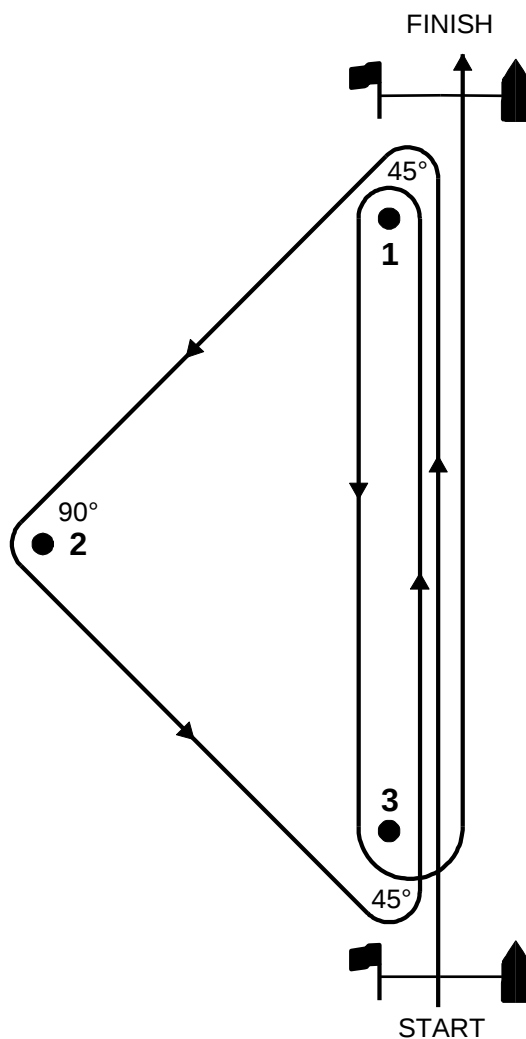
The chairman of the protest committee is: Peter Nannenber.

Attachment ASAILING AREA



**Attachment B**  
ILLUSTRATING THE COURSE

**A Windward-Leeward-Triangle Course**



**Start - 1 - 2 - 3 - 1 - 3 - Finish**

*Options for this course include*

- (1) *increasing or decreasing the number of laps,*
- (2) *deleting the last windward leg,*



- (3) *varying the interior angles of the triangle (45°–90°–45° and 60°–60°–60° are common),*
- (4) *using a gate instead of a leeward mark for downwind legs (but not reaches).*
- (5) *using an offset mark at the beginning of downwind legs (but not reaches), and*
- (6) *using the leeward and windward marks as starting and finishing marks.*

*Be sure to specify the interior angle at each mark.*